

BELL HOUSING (CAST IRON)

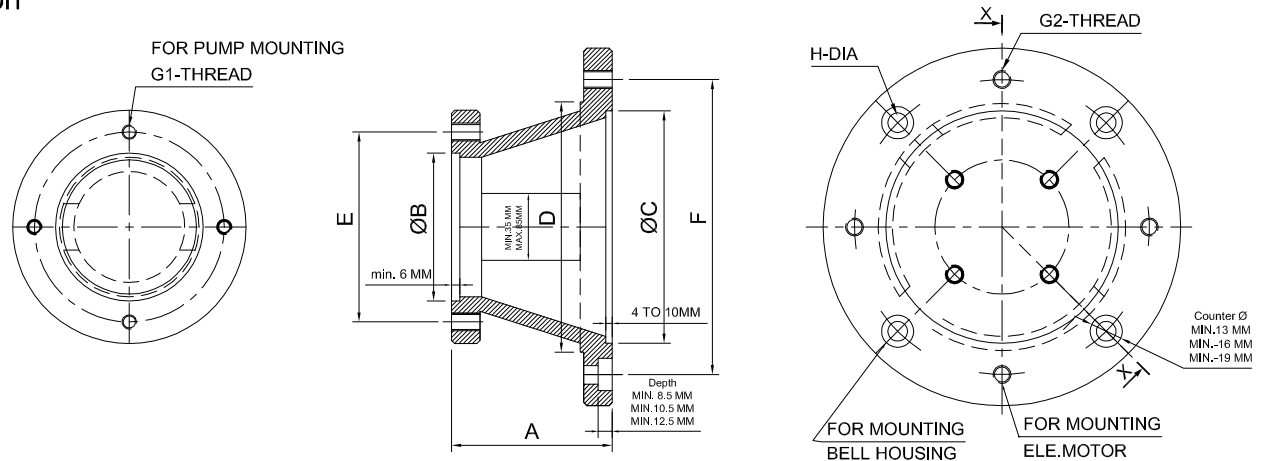
FLUDEN

Product Characteristics

- By using bell housings motor and pump shaft are aligned to each other optimally
- Horizontal assembly possible with foot cum flange motor
- Bell housing material high graded cast iron
- Fluden bell housing are precisely machined to reduce misalignment of couple shafts.
- Casting bell housing also reduces the noise generation considerably
- Casting bell housing size available as per factory stock



Section



Dimensional Details

FRAME SIZE	MOTOR H.P.	A	B	C	D	E	F	G1	G2	H
71	0.5	75	82.6	110	115	106.2	130	M10	M8	8.5
80	0.75, 1	80	82.6	130	140	106.2	165	M10	M10	10.5
90S, 90L	1.5, 2	100	82.6	130	140	106.2	165	M10	M10	10.5
90S, 90L	1.5, 2	122	101.6	130	140	145.9	165	M12	M10	10.5
90S, 90L	1.5, 2	130	127	130	140	180.8	165	M16	M10	10.5
100L, 112M	3, 5	110 122	82.6	180	180	106.2	215	M10	M12	10.5
100L, 112M	3, 5	145	100 101.6	180	180	140 145.9	215	M12	M12	10.5
100L, 112M	3, 5	145	125 127	180	180	180.8	215	M16	M12	10.5
132S, 132M	7.5, 10	145 170	82.6	230	230	106.2	265	M10	M12	10.5
132S, 132M	7.5, 10	170	100 101.6	230	230	140 145.9	265	M12	M12	10.5
132S, 132M	7.5, 10	170	125 127	230	230	180.8	265	M16	M12	10.5
160M/L, 180M/L	12.5,15,20,25,30	200	82.6	250	250	106.2	300	M10	M16	10.5
160M/L, 180M/L	12.5,15,20,25,30	200	100 101.6	250	250	140 145.9	300	M12	M16	10.5
160M/L, 180M/L	12.5,15,20,25,30	200	125 127	250	250	180.8	300	M16	M16	10.5
200L	40	210	100 101.6	300	300	140 145.9	350	M12	M16	10.5
200L	40	210	125 127	300	300	180.8	350	M16	M16	10.5
225S, 225M	50, 60	250	100 101.6	350	300	140 145.9	400	M12	M16- 8 nos.	13- 8 nos.
225S, 225M	50, 60	250	125 127	350	300	180.8	400	M16	M16- 8 nos.	13- 8 nos.
250 MB	75	255 280	101.6 127	450	400	145.9 180.8	500	M12 M16	M16- 8 nos.	13- 8 nos.

Note: * This bell housing dimension as per Fluden gear coupling & Fluden standard
 * Bell housing kits with Bore key ways coupling & all mounting bolt also available
 * As per your required pump mounting detail bell housing also available.

* Tolerance: (+)(-) 1 MM

DIMENSIONS IN MM FOR REFERENCE ONLY