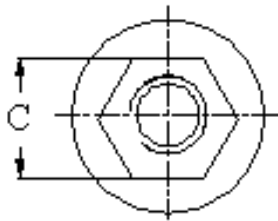
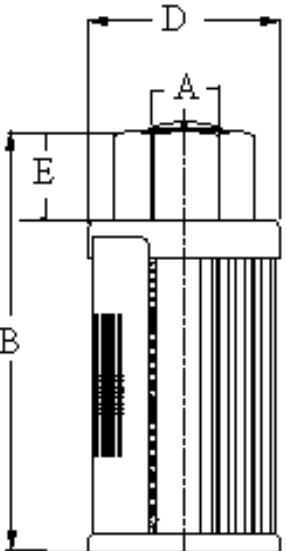
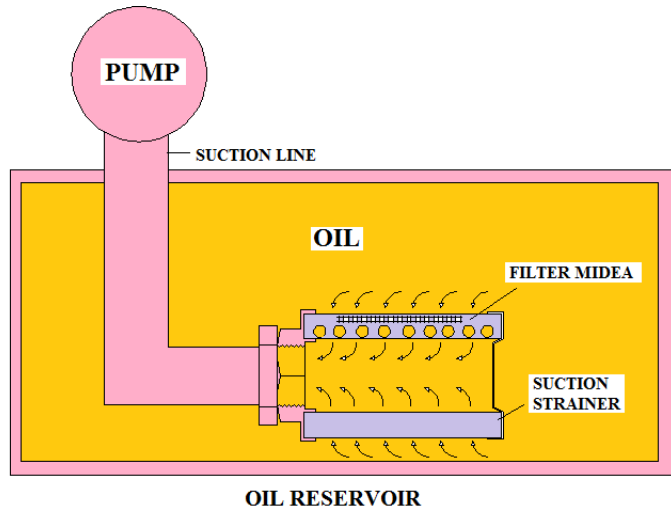


- REUSABLE SS 100 MESH / 149 MICRON STD
- ALUMINIUM DIE CAST NUT
- CONTINUOUS BONDING
- MAX. WORKING TEMP. 80 ° C.
- SUITABLE FOR HYDRAULIC / MINERAL OIL



MODEL NO	FLOW LPM	THREAD SIZE	OVERALL LENGTH	NUT A/F	CAP DIA	NUT LENGTH	SCREEN AREA (SQ. IN)	WT. KGS.
		A	B	C	D	E		
STR4-002	8	1/4"	90	22	45		70	0.10
STR4-003	12	3/8"	90	25	45		70	0.10
STR4-005	20	1/2"	105	32	45		83	0.15
STR4-007	28	3/4"	108	36	63	15	106	0.17
STR4-010	40	1"	137	45	63	15	143	0.20
STR4-015	60	1-1/4"	139	51	85	13	167	0.27
STR4-020	80	1-1/2"	168	60	85	14	210	0.31
STR4-030	120	1-1/2"	200	60	85	14	255	0.34
STR4-040	160	2"	222	70	100	15	314	0.45
STR4-050	200	2"	260	70	100	15	353	0.47
STR4-075	300	2-1/2"	213	90	150	25	390	1.05
STR4-100	400	3"	278	100	150	25	531	1.19
STR4-150	600	3"	348	100	150	25	683	1.35

Note :-

\*Suction strainer flow handling capacity is recommended 3 to 4 times greater than pump flow handling capacity.

\*Tolerance : **+ 1.0MM**

MODEL CODE: ASSEMBLY

STR4	-0 1 0	_**	_ * *	_ * *
SERIES	SIZE	PORT THDS. SIZE	PORT THDS. CONNECTION	MICRONS. OPTIONAL #
STR4			B-BSP – STD N-NPT - OPTIONAL	149 - SS 100 MESH STD 125 - SS 120 MESH 100 - SS 150 MESH 074 - SS 200 MESH 063 - SS 250 MESH ALSO -30 / 60 MESH (OMT IF STD).

OMIT IF STANDARAD

CONSULT FACTORY FOR OPTIONAL / SPECIAL FEATURE

DIMENSIONS IN MM FOR REFERENCE ONLY